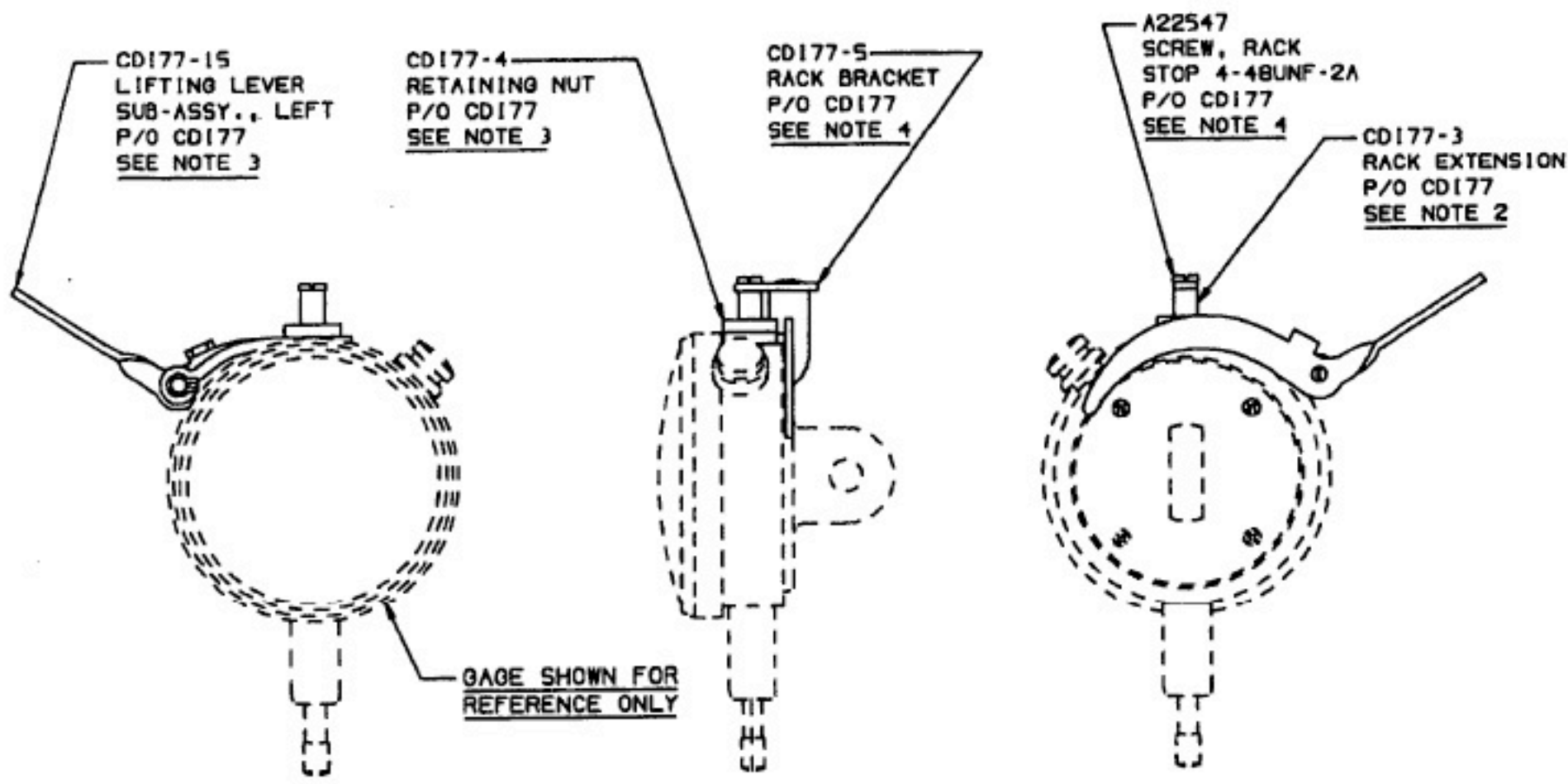


REVISIONS

LTR	DESCRIPTION	DATE	BY



NOTE:

1. REMOVE DUST CAP FROM TOP OF CASE.
2. REPLACE RACK SCREW WITH RACK EXTENSION FROM LIFTING LEVER KIT. (HOLD RACK IN PLACE WHEN REMOVING SCREW OR RACK MAY SLIP INTO CASE AND DISENGAGE FROM MOVEMENT.)
* DO NOT OVERTIGHTEN EXTENSION.
3. INSTALL LIFT LEVER BRACKET & ARM ASSEMBLY OVER TOP STEM AND HOLD IN PLACE WITH SQUARE NUT FROM KIT. TIGHTEN NUT WITH ARM ASSEMBLY IN POSITION SHOWN.
* POSITION ON LEFT OR RIGHT SIDE OF TOP STEM (AS SHOWN)
4. ASSEMBLE LIFT LEVER BRACKET TO RACK EXTENSION WITH RACK SCREW. LIFT LEVER BRACKET SHOULD BE ADJUSTED TO A POSITION POINTING TO BACK OF GAGE AND TIGHTENED IN PLACE TO GIVE FULL TRAVEL OF GAGE.
5. LIFT LEVER SHOULD MOVE FREELY AND LIFT SPINDLE UP EASILY.
6. PLACE ALL INDIVIDUAL PARTS IN A PLASTIC BAG FOR SHIPMENT.

CD177 CONSISTS OF 5 INDIVIDUAL PARTS AND/OR SUBASSEMBLIES.

CHICAGO DIAL INDICATOR CO.
1372 RIDGER ROAD, DES PLAINES, ILL. 60016

TOLERANCES UNLESS OTHERWISE SPECIFIED .XXX±1.605, .XX±1.01, FRACTIONS±1.015

ASSEMBLY, LIFTING LEVER, LEFT

DRW BY	DATE	CHK BY	DATE	TECH NO.	CAD FILE NO.	SCALE
JNEFF	10-7-97					1/1
MATERIAL: //			SIZE	DRAWING NO.		REV.
			B	CD177		