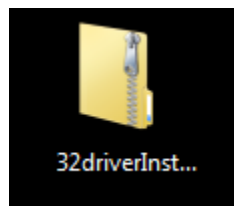


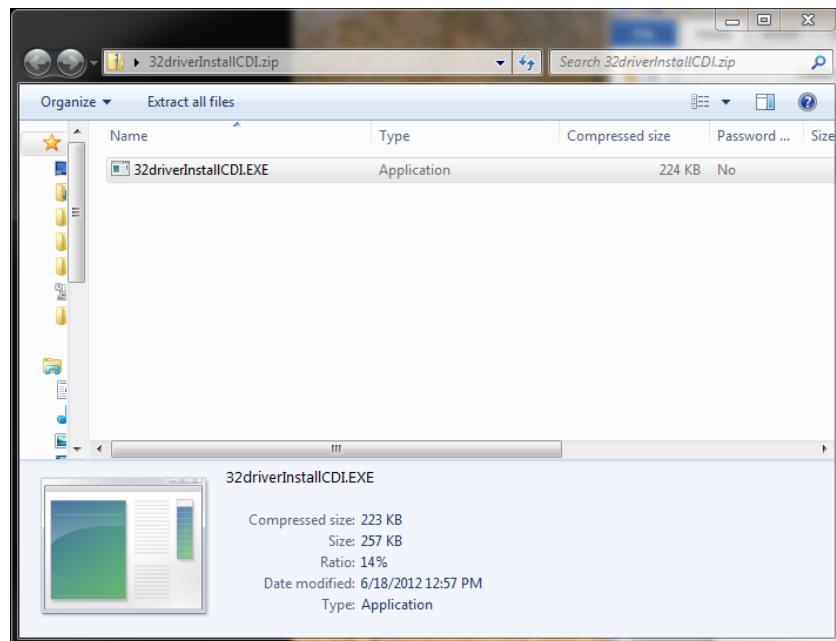
CDI Logic Gage USB Drivers

In order to use the USB functionality of the CDI logic gage, you must download and install the appropriate USB drivers.

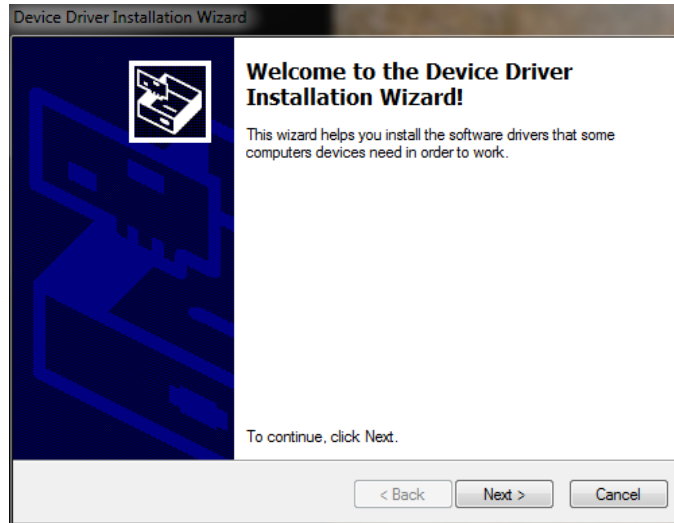
- If you are running a 32 bit operating system (Windows XP, 7 32 bit) download the file 32driverInstallCDI.zip
- If you are running a 64 bit operating system (Windows 7 64 bit) download the file 64driverInstallCDI.zip



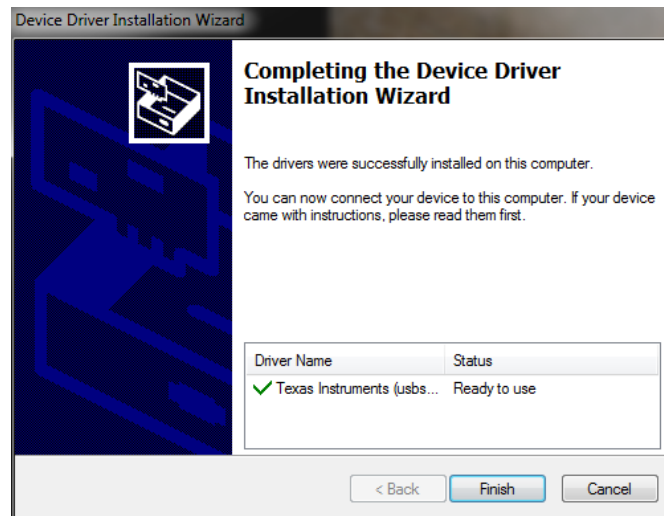
Once you have downloaded the appropriate file, double click on it to open the zip file



The zip file should contain a single file called 32driverInstallCDI.EXE or 64driverInstallCDI.EXE double click to run this file and you will get a window that pops up called Device Driver Installation Wizard



Click Next on this window and the driver will be automatically installed



You can now click Finish and connect your CDI logic gage. It will show up as Virtual COM Port (CDC) and can be used like any standard serial device.